



VESSELS

Renewables



seaway<sup>7</sup>

# Hawk

## Vessel Info

*Full specification overleaf*

**Hawk** is a semi-submersible vessel designed for offshore and onshore facilities by means of float on/off, skid on/off, roll on/off and lift on/off operation.

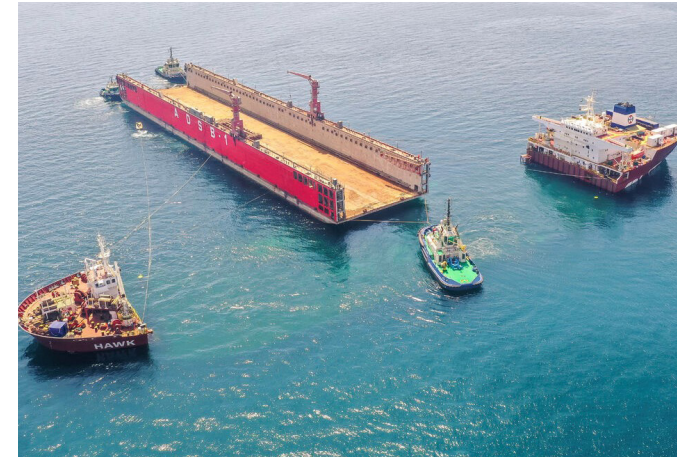




Hawk

**TECHNICAL DATA**

Classification	DNV GL
Flag	Norwegian International Ship (NIS)
IMO	8616556
Length over all	223.07m
Length p.p.	214.07m
Breadth moulded	55.50m
Depth moulded	13.00m
Summer draft	10.06m
Deadweight	64,900mt
Submerged depth above deck	10.50m
Max deck load	25-30mt/m <sup>2</sup>
Free deck length	157.00m
Free deck area	8,700m <sup>2</sup>
Main engine	MAN B&W 6S70
Bow thruster	1x 2,000kw
Cruising speed	12 knots
Cruising range	25,000nm
Accommodation	40 people
Converted	2008



[chartering@seaway7.com](mailto:chartering@seaway7.com)



[www.seaway7.com](http://www.seaway7.com)