

The image shows a large red and white ship, the Seaway Moxie, with the number 7 on its side, positioned next to a massive offshore wind turbine. The ship is equipped with a large crane and is working on the yellow base of the turbine. The background features a blue sky with some clouds and another smaller ship in the distance. The overall scene is set on the ocean.

seaway<sup>7</sup>

A GLOBAL LEADER  
IN THE DELIVERY OF  
OFFSHORE WIND PROJECTS

CREATING  
**A FUTURE**  
WE CAN BE  
**PROUD OF**

# WHO WE ARE

## Vision

To lead the way in the delivery of offshore wind projects, contributing to an efficient and sustainable energy supply for the future.

## Values



### Safety

Our goal is an incident-free workplace. We work every day, everywhere to make sure all our people are safe.



### Performance

We are driven to achieve the outcomes our clients want. We are trusted to achieve superior performance from every project.



### Integrity

We apply the highest ethical standards in everything we do. We treat clients, our people, partners and suppliers fairly and with respect.



### Collaboration

We work closely and openly together with clients, partners and suppliers at local and global level to deliver safer and stronger results for all.



### Sustainability

We take a proactive approach towards our social responsibilities, mitigate the impact of our activities on our planet's environment and respond to the effects of climate change.



### Innovation

We create smarter and simpler solutions to meet the industry's needs. We combine technology, expertise, assets and partnerships to deliver projects in new ways.

## Key figures



**15+ years track record in offshore wind**



**\$1.2bln annual revenue (2024)**



**\$2.1bln backlog (Dec 2024)**



**~1,250 employees worldwide**



**50+ nationalities**



**Subsea7 100% shareholder**

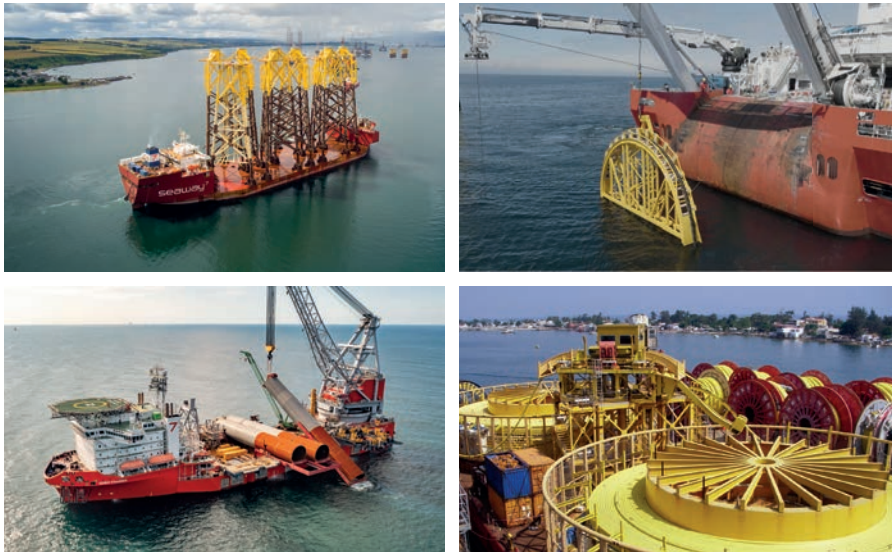


# OUR SERVICES

Our service offering is built around a unique combination of advanced technical capabilities and assets, and the ability to deliver projects through a range of attractive contracting models:

## Bottom Fixed Wind

- **T&I stand-alone:** Transport & installation of foundations, cables, wind turbines and substations
- **Integrated Projects:** Comprising the T&I of both the foundations and cables scope as a single offering; possibly complemented with the wind turbine installation
- **EPCI Solutions:** Project, where in addition to the T&I offering, we also manage the design, procurement and fabrication to deliver a full project solution



## Floating Wind

- **Marine contractor for Floating wind Projects:** T&I of floaters, moorings and/or cables, as well as ability to procure all elements of the mooring and cables system
- **Optional services:** WTG integration, floater transportation and marshalling, substation installation



# TRACK RECORD

As a leader in the delivery of offshore wind projects, we have contributed towards over 11 gigawatts through the installation of fixed offshore wind foundations and submarine cables in Europe, Asia and the USA.

## 15+ years in fixed wind and pioneering in floating wind

Track record in delivering serial offshore fixed wind, including integrated and EPCI solutions

**seaway**<sup>7</sup>



Serial fabrication  
of WTG  
Foundations



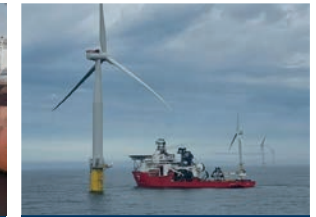
**1,400+**  
WTG Foundations  
installed



**40+**  
Substations  
installed



**1,600+**  
Submarine cables  
installed



Hywind Scotland  
& Tamen floating  
offshore wind:  
Cables installation

## 40+ years in floating systems

Highly transferable expertise in delivering large complex EPCI offshore projects involving floating structures, mooring systems and dynamic cables

**subsea**<sup>7</sup>



**25+ years**  
EPCI floating  
systems



**1,000+ km**  
Tow distances



**90+**  
moored  
installation  
projects



Extensive track  
record in  
dynamic cable  
EPCI



Kincardine and  
Hywind Scotland  
floaters transportation



**CASE STUDY: SEAGREEN OFFSHORE WIND FARM**  
Delivering the largest EPCI offshore wind farm contract



# OUR GLOBAL PRESENCE



**8 OPERATIONAL OFFICES**

**6 SALES OFFICES**

# OUR PEOPLE

Our offshore operations are managed and crewed by some of the industry's most experienced marine and construction professionals, delivering agile, client-focused solutions committed to minimizing our environmental impact in every offshore project.

**~850** PEOPLE ONSHORE

**~400** OFFSHORE WORKFORCE

# OUR FLEET

Seaway7 delivers industry-leading offshore wind energy solutions through its owned, state-of-the-art fleet—engineered for world-class performance, capability, and scale. Our specialized vessels include:



## Cable Lay Vessels

Delivering advanced and dedicated solutions for cable installation (for fixed and floating)



## Jack-up Installation Vessel

High-capacity, stable, and versatile, ideal for large offshore wind turbine installations



## Heavy Lift Vessels

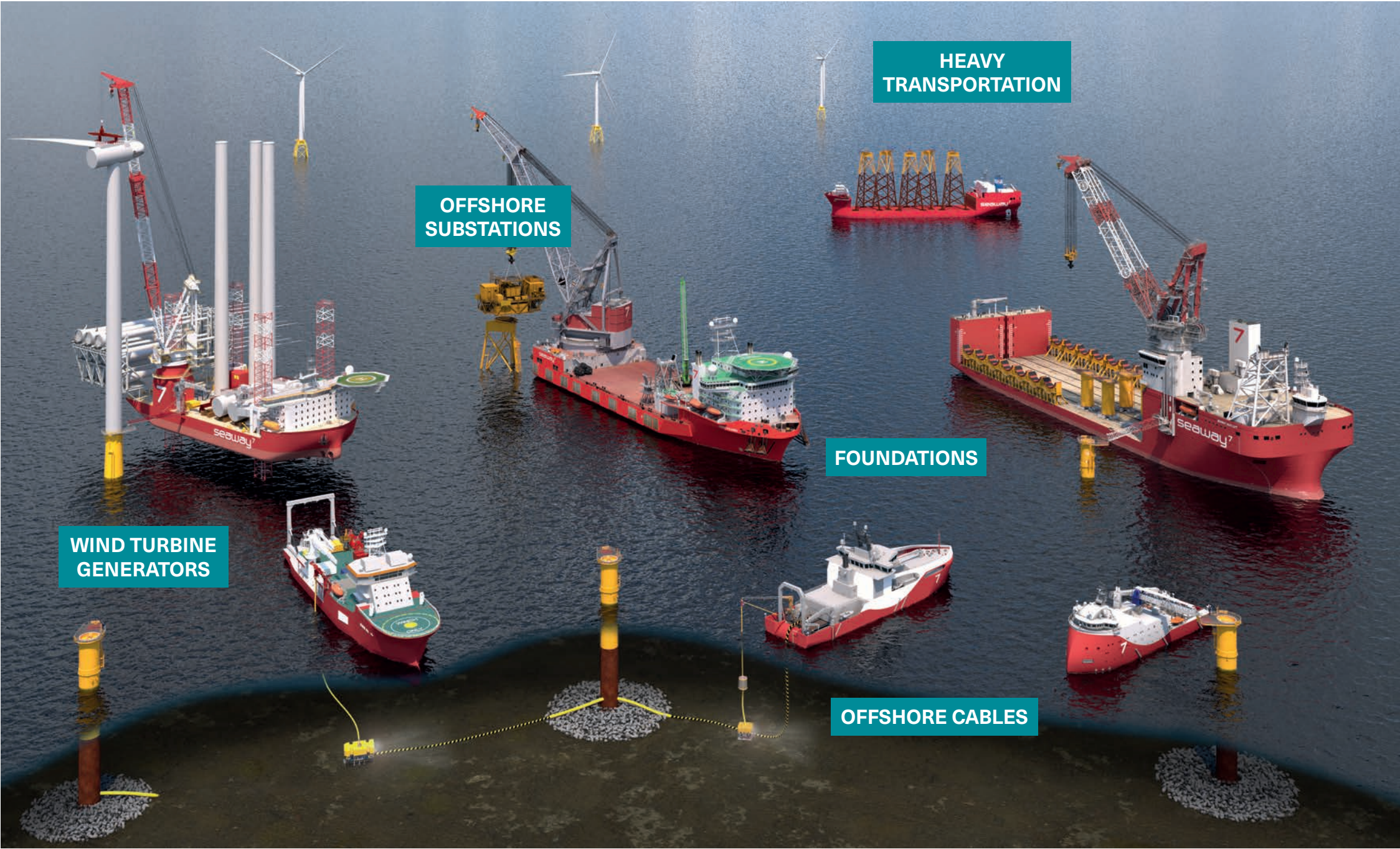
Designed for the heaviest offshore structures, both foundations and substations



## Transportation Vessels

Efficient, reliable transport of critical components across oceans





HEAVY  
TRANSPORTATION

OFFSHORE  
SUBSTATIONS

FOUNDATIONS

WIND TURBINE  
GENERATORS

OFFSHORE CABLES

## CONTACT

**Daniel Cho** 조창동 대표

MD/Country Director, Seaway 7 Korea 대표

Email: Daniel.Cho@Seaway7.com

Mobile: +82 10 9319 7313

Seaway7 Korea

S3020, 3rd Fl., Sejong-daero, Jung-gu, Seoul, KOREA, 04520

(Seoul Finance Center)

Website: [www.seaway7.com](http://www.seaway7.com)